



24/1158 Cavendish Road Mount Gravatt East QLD

3 **2** **2**

Do not miss this opportunity to secure a fantastic family townhome! Situated in the heart of a growing suburb, this property offers a convenient location, wonderful space, in a secure and well looked after complex. This home checks all the boxes, and is ready for it's next family!

This immaculately presented 3 bedroom townhouse is situated less than 5km from Mount Gravatt Plaza, Westfield Carindale, Garden City Shopping Centre, and boasts an impressive selection of schools (Mansfield State School, Cavendish State High School, Seton College, and Mt Gravatt TAFE campus), while being only 12 km to the CBD.

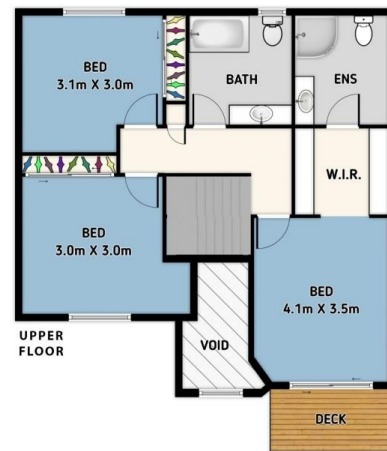
The townhouse features air conditioning, a great layout, as well as a private courtyard area perfect for entertaining, with enough garden space for a green thumb to create something wonderful. The complex has an entrance gate

Price : \$ 545,000

View : <https://www.christieandco.com.au/sale/qld/southside/mount-gravatt-east/residential/townhouse/7228184>



Adam Neihl
07 3185 2088



Unit 24/1158 Cavendish Rd, Mount Gravatt East QLD 4122

Whilst every attempt has been made to ensure the accuracy of the floor plan, this plan is for illustrative purposes only. All dimensions and fittings are approximate.

TOTAL SIZE: 244m²



CHRISTIE & Co.
PROPERTY GROUP